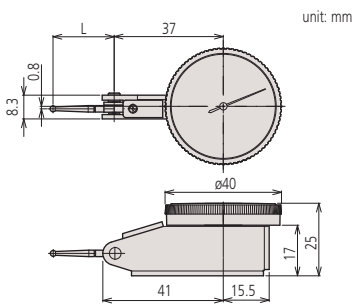
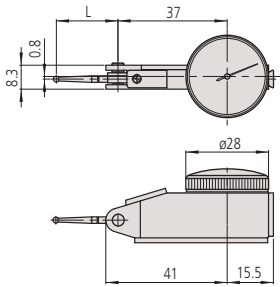


## DIMENSIONS



Order No.	L
513-424E/513-478E	22.3
513-404E/513-474E	20.9
513-415E/513-477E	44.5
513-426E	22.3
513-405E/513-475E	14.7
513-425E	14.7
513-401E/513-471E	12.8
513-414E	36.8
513-409	14.7



Order No.	L
513-466E	22.3
513-464E	20.9
513-465E	14.7

### Special Set: No. 513-908 (mm)

513-404E: Dial test indicator  
7014E: Mini magnetic stand

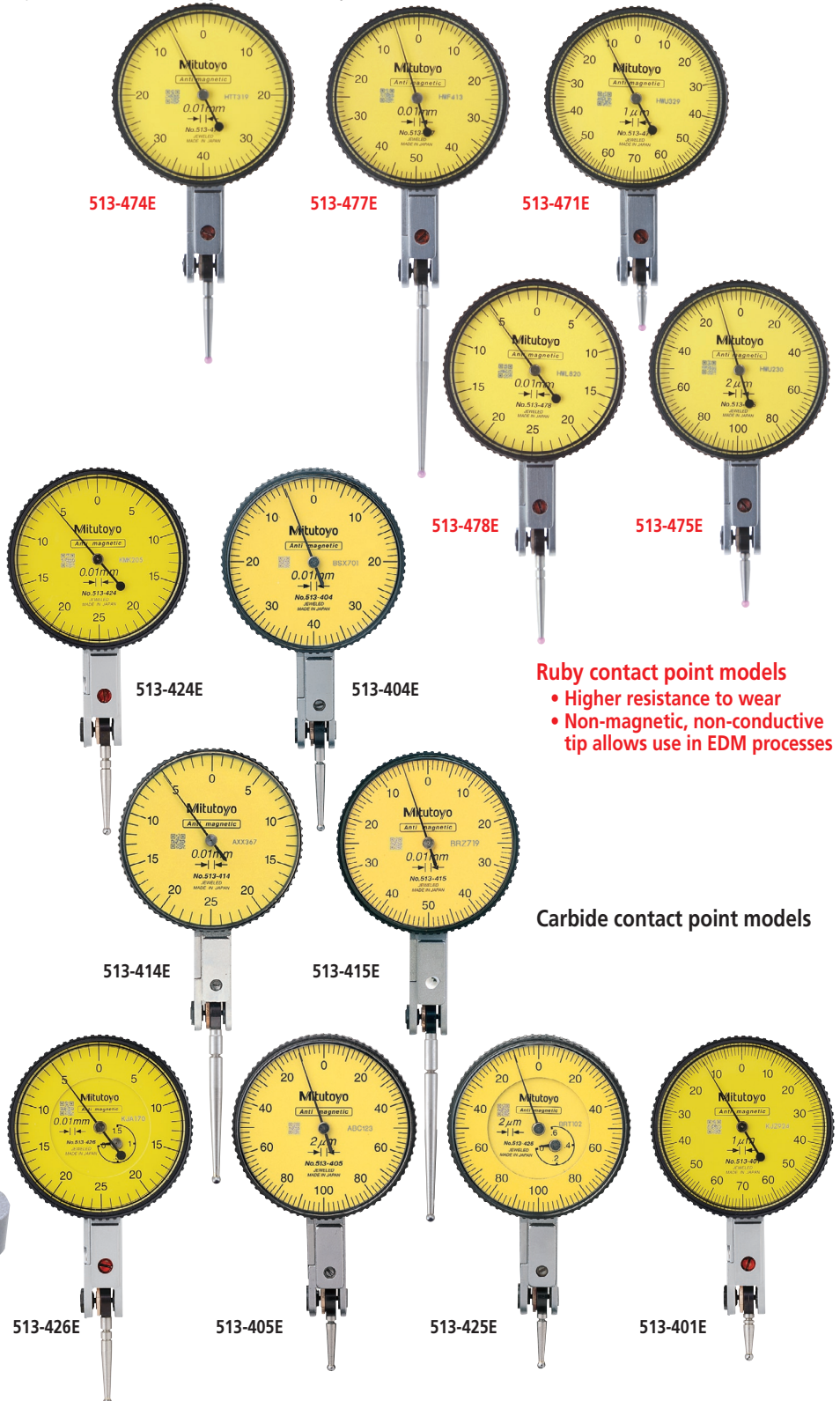
### No. 513-907 (inch)

513-402E: Dial test indicator  
7014E: Mini magnetic stand



## Dial Test Indicator SERIES 513 — Horizontal Type

- Provides easy access to shrouded surfaces that cannot be reached with conventional dial indicators.
- No-clutch structure for automatic reversal of measuring direction.
- Resistant to water and dust thanks to the one-piece bezel and O-ring seal for the crystal.
- The glare-free flat crystal face has a scratch-resistant coating.
- High sensitivity and quick response due to low-friction jeweled bearings.



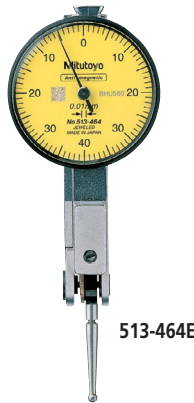
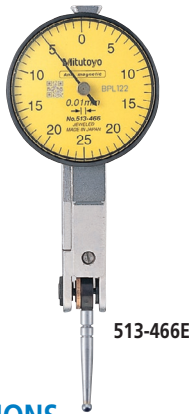
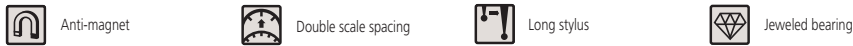
### Ruby contact point models

- Higher resistance to wear
- Non-magnetic, non-conductive tip allows use in EDM processes

### Carbide contact point models

# Dial Test Indicators

Comparison measuring instruments which ensure high quality, high accuracy and reliability.



## SPECIFICATIONS

Metric			Graduation	Range	Accuracy	Dial reading	Measuring force	Anti-magnet	Double scale spacing	Long stylus	Jeweled bearing	Compact	With revolution counter
Basic set	Plus set	Full set											
513-424E	513-424A	513-424T	0.01mm	0.5mm	5µm	0-25-0	0.3N or less	✓	✓	—	✓	—	—
513-478E	—	—	0.01mm	0.5mm	5µm	0-25-0	0.3N or less	✓	✓	—	✓	—	—
513-414E	513-414A	513-414T	0.01mm	0.5mm	10µm	0-25-0	0.2N or less	✓	✓	✓	✓	—	—
513-466E	—	—	0.01mm	0.5mm	5µm	0-25-0	0.3N or less	✓	✓	—	✓	✓	—
513-404E	513-404A	513-404T	0.01mm	0.8mm	8µm	0-40-0	0.3N or less	✓	—	—	✓	—	—
513-474E	—	—	0.01mm	0.8mm	8µm	0-40-0	0.3N or less	✓	—	—	✓	—	—
513-464E	—	—	0.01mm	0.8mm	8µm	0-40-0	0.3N or less	✓	—	—	✓	✓	—
513-415E	513-415A	513-415T	0.01mm	1mm	10µm	0-50-0	0.2N or less	✓	—	✓	✓	—	—
513-477E	—	—	0.01mm	1mm	10µm	0-50-0	0.2N or less	✓	—	✓	✓	—	—
513-426E	513-426A	—	0.01mm	1.5mm	8µm	0-25-0	0.4N or less	✓	✓	—	✓	—	✓
513-405E	513-405A	513-405T	0.002mm	0.2mm	3µm	0-100-0	0.3N or less	✓	—	—	✓	—	—
513-475E	—	—	0.002mm	0.2mm	3µm	0-100-0	0.3N or less	✓	—	—	✓	—	—
513-465E	—	—	0.002mm	0.2mm	3µm	0-100-0	0.3N or less	✓	—	—	✓	✓	—
513-425E	513-425A	—	0.002mm	0.6mm	6µm	0-100-0	0.4N or less	✓	—	—	✓	—	✓
513-401E	—	—	0.001mm	0.14mm	3µm	0-70-0	0.3N or less	✓	—	—	✓	—	—
513-471E	—	—	0.001mm	0.14mm	3µm	0-70-0	0.3N or less	✓	—	—	✓	—	—

Provided with a ø2mm ruby contact point as a substitute for ø2mm carbide contact point.

Inch			Graduation	Range	Accuracy	Dial reading	Measuring force	Anti-magnet	Long stylus	Jeweled bearing	Compact	With revolution counter
Basic set	Plus set	Full set										
513-402	—	513-402T	.0005"	.03"	±.0005"	0-15-0	0.3N or less	✓	—	✓	—	—
513-472	—	—	.0005"	.03"	±.0005"	0-15-0	0.3N or less	✓	—	✓	—	—
513-412	—	513-412T	.0005"	.03"	±.0005"	0-15-0	0.2N or less	✓	✓	✓	—	—
513-479	—	—	.0005"	.03"	±.0005"	0-15-0	0.2N or less	✓	✓	✓	—	—
513-462	—	—	.0005"	.03"	±.0005"	0-15-0	0.3N or less	✓	—	✓	✓	—
513-403	—	513-403T	.0001"	.008"	±.0001"	0-4-0	0.3N or less	✓	—	✓	—	—
513-473	—	—	.0001"	.008"	±.0001"	0-4-0	0.3N or less	✓	—	✓	—	—
513-463	—	—	.0001"	.008"	±.0001"	0-4-0	0.3N or less	✓	—	✓	✓	—

Provided with a .079" DIA ruby contact point as a substitute for .079" DIA carbide contact point.

Metric/inch			Graduation	Range	Accuracy	Dial reading	Measuring force	Anti-magnet	Jeweled bearing
Basic set	Plus set	Full set							
513-409	—	513-409T	0.002mm, .0001"	0.2mm, .0075"	3µm	0-10-0, 0-3.8-0	0.3N or less	✓	✓

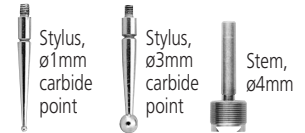
Inch/Metric			Graduation	Range	Accuracy	Dial reading	Measuring force	Anti-magnet	Jeweled bearing
Basic set	Plus set	Full set							
513-406	—	513-406T	.0005", 0.01mm	.03", 0.7mm	±.0005"	0-15-0, 0-35-0	0.3N or less	✓	✓

## Set Configuration: Metric and Metric/Inch

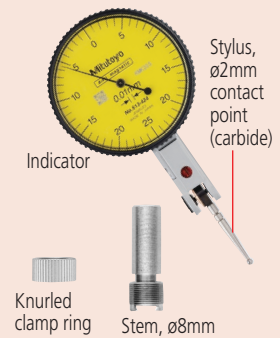
### Full set



### Plus set

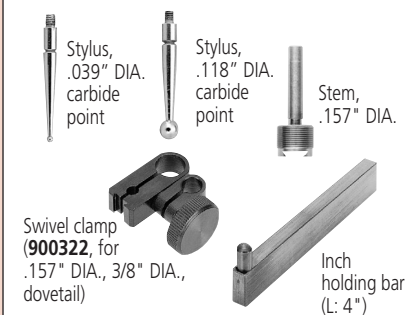


### Basic set



## Set Configuration: Inch and Inch/Metric

### Full set



### Basic set

